

# ZBox setup Instructions

The ZBox will allow you to connect a speaker and switch between SPL and impedance measurements without changing wires. Below are the setup instructions for using the ZBox within Praxis. When using the ZBox within AudioPass, these changes will automatically be configured.

If the ZBox is disconnected and the original Probes are used, the resistor values in the software for Probe 1 and Probe 2 should be set back to the default 47.5kohm. You can use the steps below to set the values back to 47.5kohms

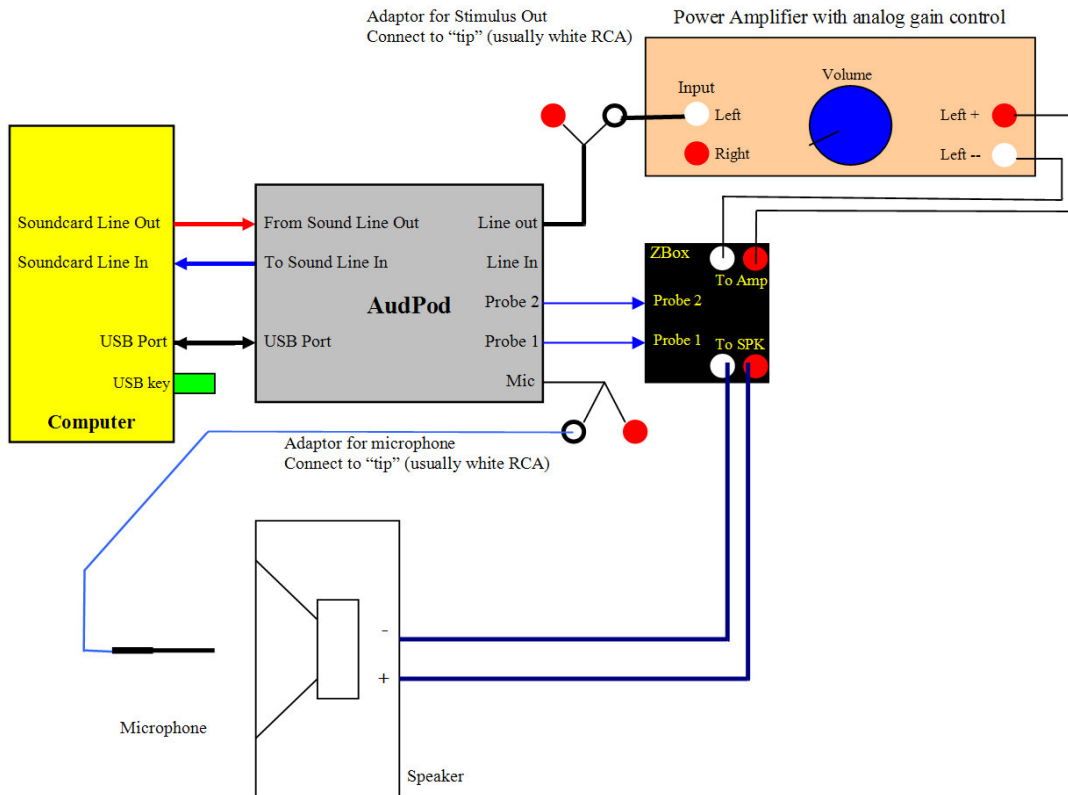
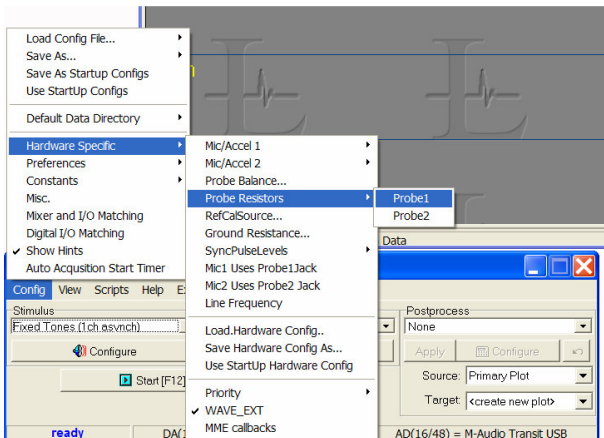


Figure 1

Connect speaker according to Figure 1.

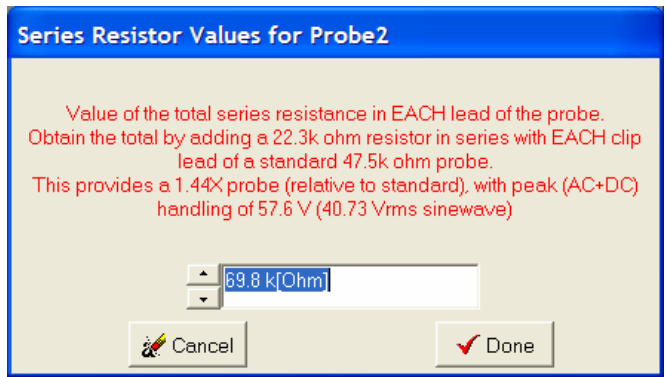
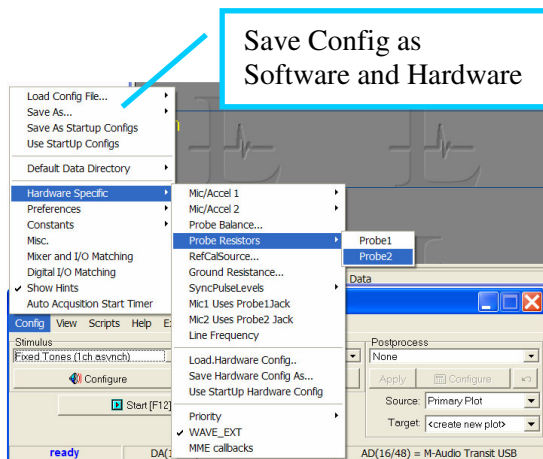


### Series Resistor Values for Probe1

Value of the total series resistance in EACH lead of the probe. These resistors should be within an impedance test fixture, permanently attached at each end a low valued (approximately 1 ohm) current sense resistor, and used **INSTEAD OF** a standard 47.5k ohm probe. This provides a 0.16X probe (relative to standard), with peak (AC+DC) handling of 6.25 V (4.42 Vrms sinewave)

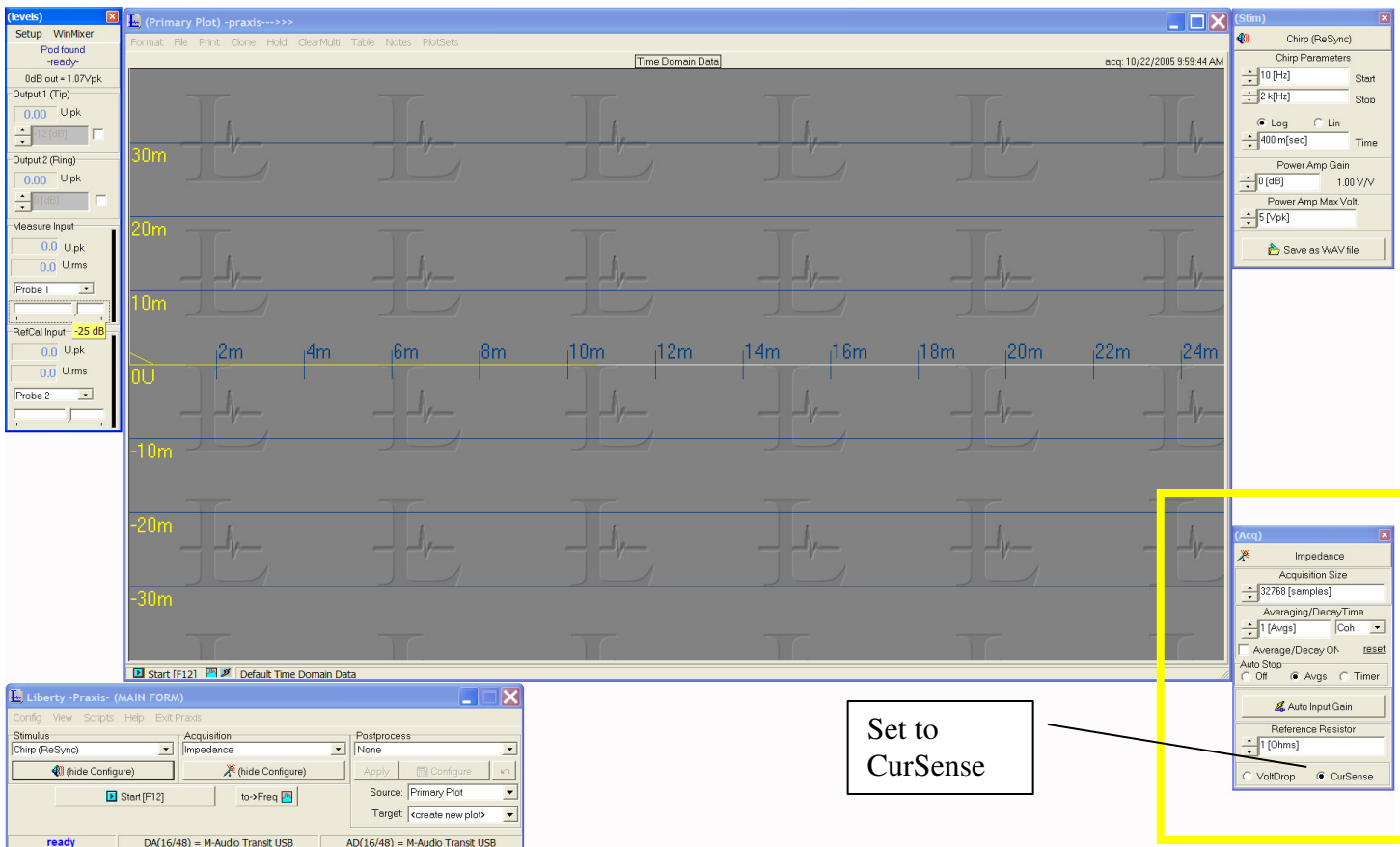
Cancel
Done

Change Probe 1 resistor values. In the “Main form” go to Config>Hardware Specific>Probe Resistor>Probe 1 and change Probe 1 to 4.75kohms



Change Probe 2 resistor values in the “Main form” go to Config>Hardware Specific>Probe Resistor>Probe 2 and change Probe 2 to 69.8kohms

Save these settings in your config files as “Software and hardware” and give it a name when you use the ZBox during SPL measurements



For the impedance measurements change setting in the software per the setting above- Probe 1 to 4.75k and Probe 2 to 69.8k. For impedance measurements change the measurement type in the (Acq) to CurSense using 1ohm. Also save this as a Config file for future impedance measurements. Save the Config as “Software and hardware” and give it a name.